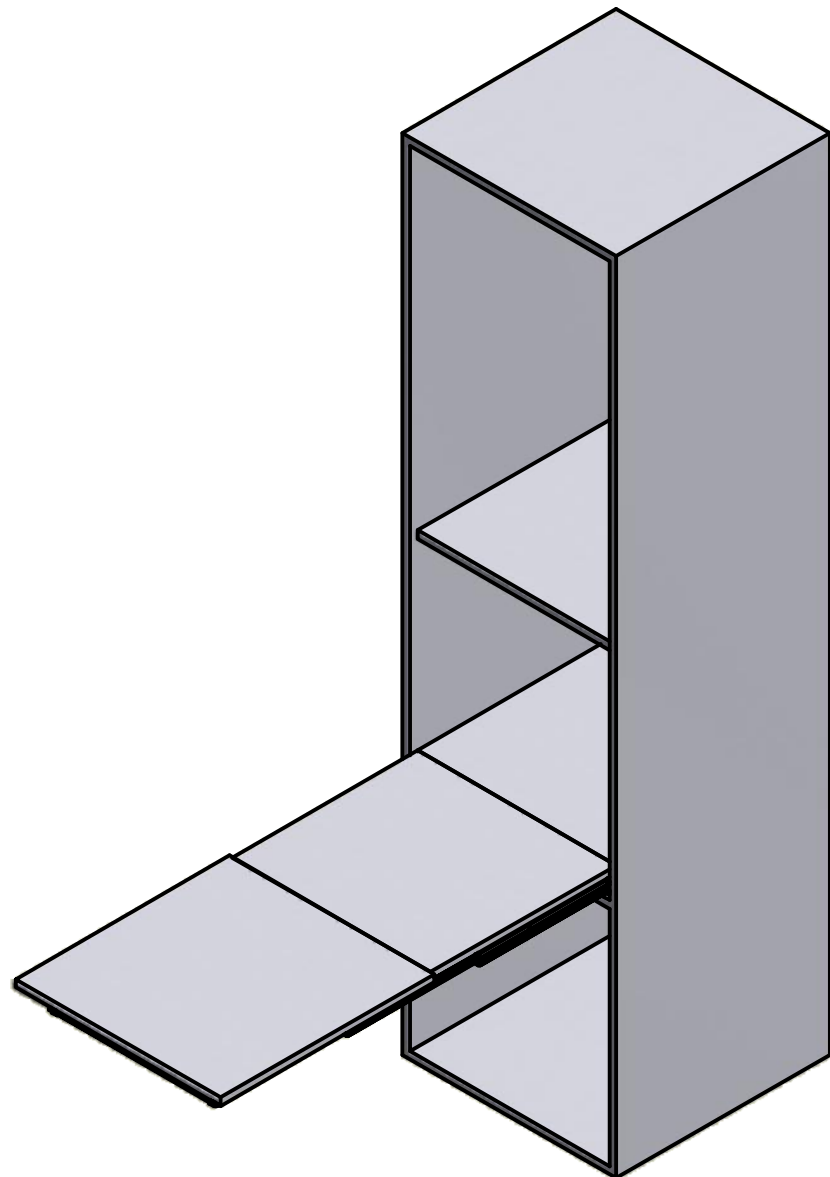


HOMework

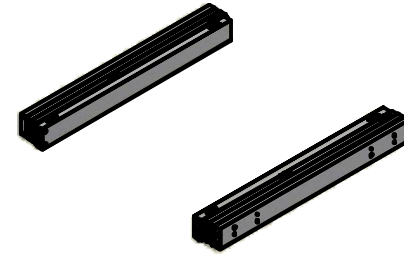
ISTRUZIONI DI MONTAGGIO ASSEMBLY INSTRUCTIONS

MODELLI:
MODELS:

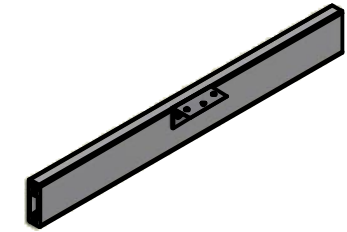
411/78.1200.22 - Homework 600
411/78.1210.22 - Homework 900
411/78.1220.22 - Homework 1200



CONTENUTO DELLA CONFEZIONE INCLUDED IN THE PACKAGING



GUIDE
SLIDES



TRAVERSO
CONNECTION BAR

SACCHETTO ACCESSORI - ACCESSORIES



A. Chiave esa. n.3 - n° 3 Allen key



B. Chiave esa. n.5 - n° 5 Allen key



C. Distanziale per spalla - Side spacer (x 20)



D. Bussola in ottone M6 12x8 mm - M6 12x8 mm brass bush (x 8)



E. Vite TCBCE M5x10 ISO 7380 - M5x10 ISO 7380 screw (x 8)



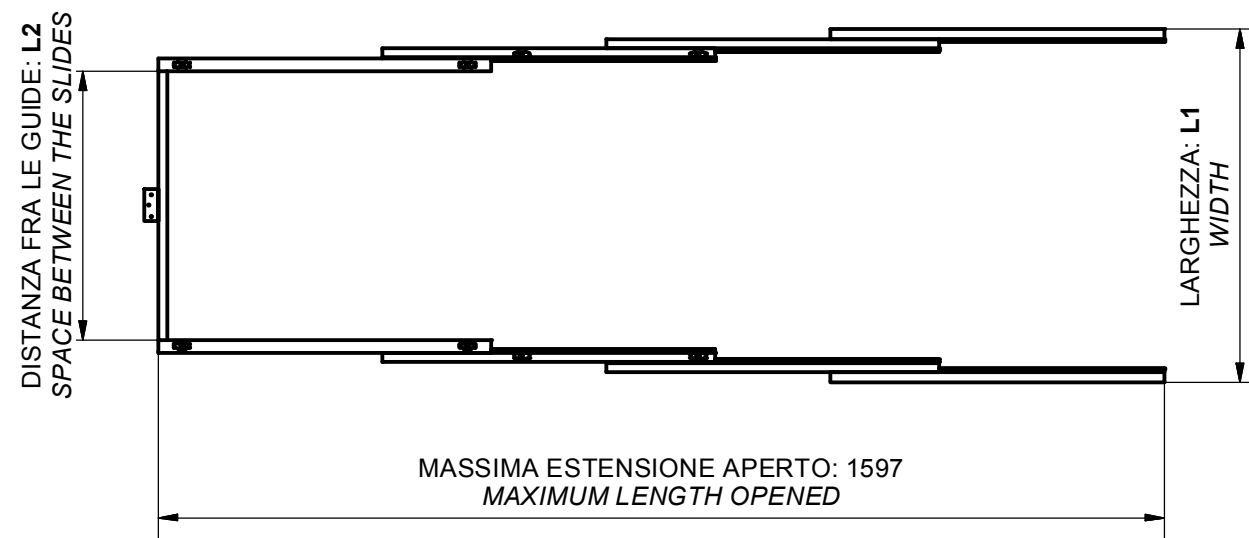
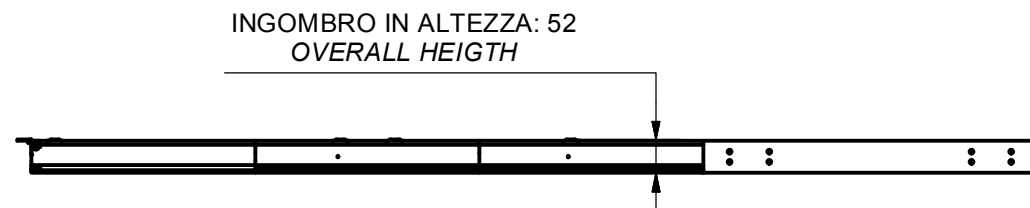
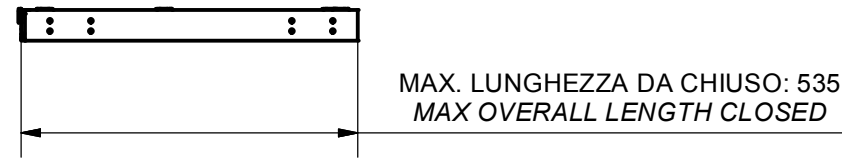
F. Vite TCCE M6x12 - M6x12 socked head cap screw (x 12)



G. Vite truciolare 3.5x16 - 3.5x16 chipboard screw (x3)

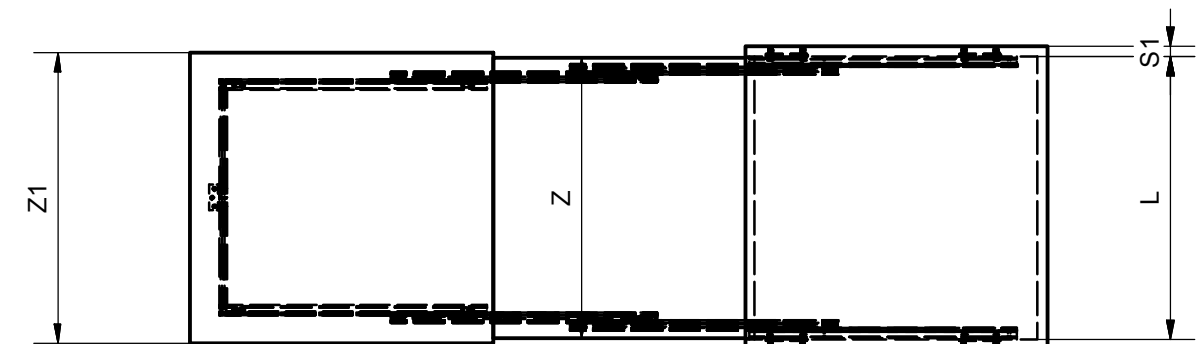
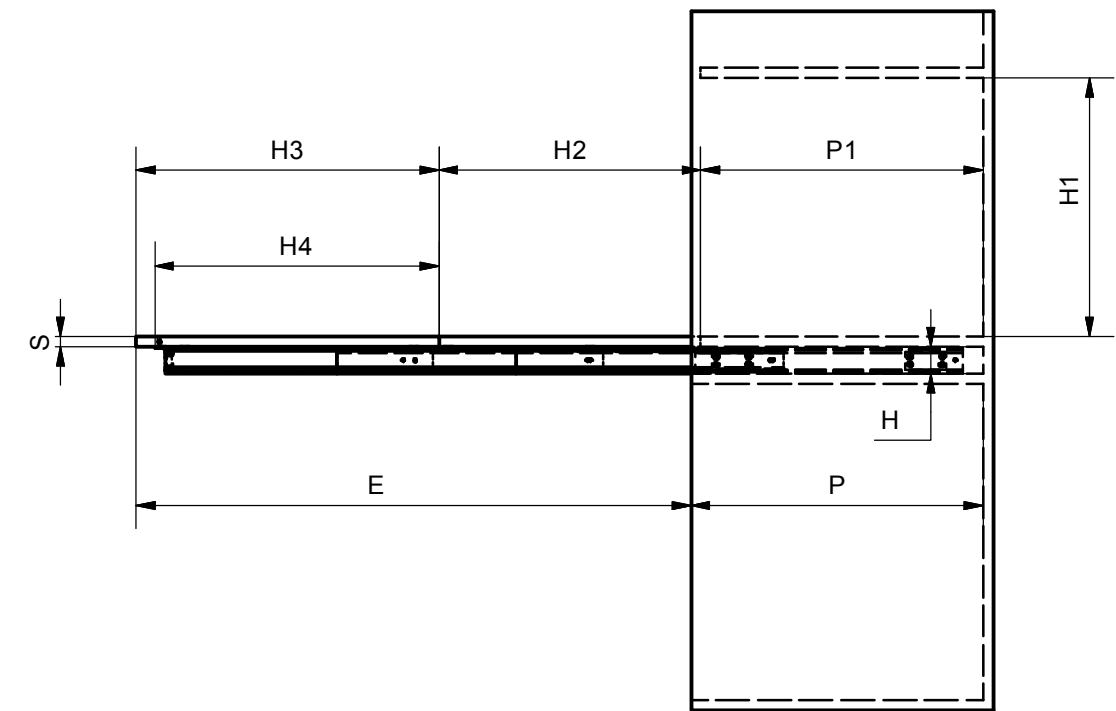
DIMENSIONI DI MASSIMA GENERAL DIMENSIONS

CODICE - CODE	MODULO - MODULE	L1 MIN/MAX (mm)	L2 (mm)
411/39.1200.25	600	560/570	426
411/39.1210.25	900	860/870	726
411/39.1220.25	1200	1160/1170	1026



DIMENSIONI GENERALI MOBILE GENERAL CABINET DIMENSIONS

DIMENSIONE - DIMENSION	SIMBOLO - SYMBOL	mm
LUCE VERTICALE - VERTICAL FREE SPACE	H	MIN: 54
PROFONDITA' - DEPTH	P	MIN: 540
PROFONDITA' PIANO - DEPTH TOP	P1	P-S
LARGHEZZA - WIDTH	L	MIN: 560 MAX: 1170
SPESSORE SPALLA - SIDE THICKNESS	S1	15-20
SPESSORE PIANI - TOP THICKNESS	S	MIN: 16
LARGHEZZA PIANO 1 - TOP WIDTH 1	Z	L-5
LARGHEZZA PIANO 2 - TOP WIDTH 2	Z1	Z+(S1-4)
APERTURA PIANO - TOP OPENING	E	1100
ALTEZZA VANO - SPACE HEIGHT	H1	MAX: H2
ALTEZZA PIANO 1 - TOP HEIGHT 1	H2	MAX: 520
ALTEZZA PIANO 1 - TOP HEIGHT 1	H3	MIN: H2+80
POSIZIONE CERNIERA - HINGE POSITION	H4	H2+44



POSIZIONE FORI FISSAGGIO MECCANISMO

HOLES FOR MECHANISM POSITION

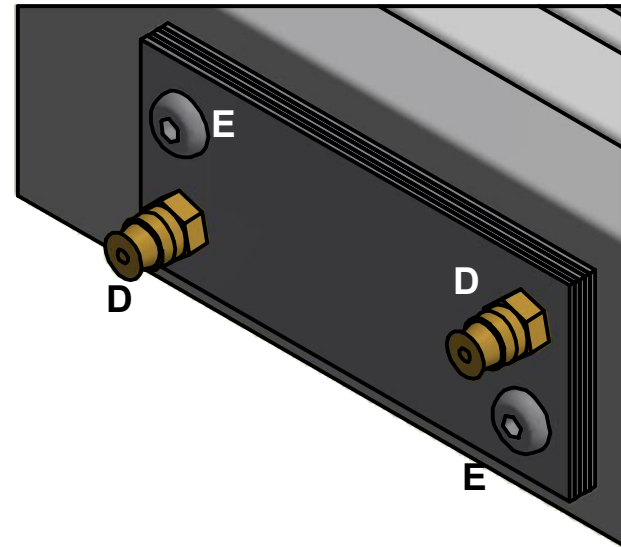
A: Posizione fori diam. 8x13 per bussole M6
Position of diam. 8x13 holes for M6 bushes





B: Posizione scarichi da Ø10x5 per testa viti fissaggio distanziali
Position of Ø10x5 holes for the heads of screws fixing the spacers

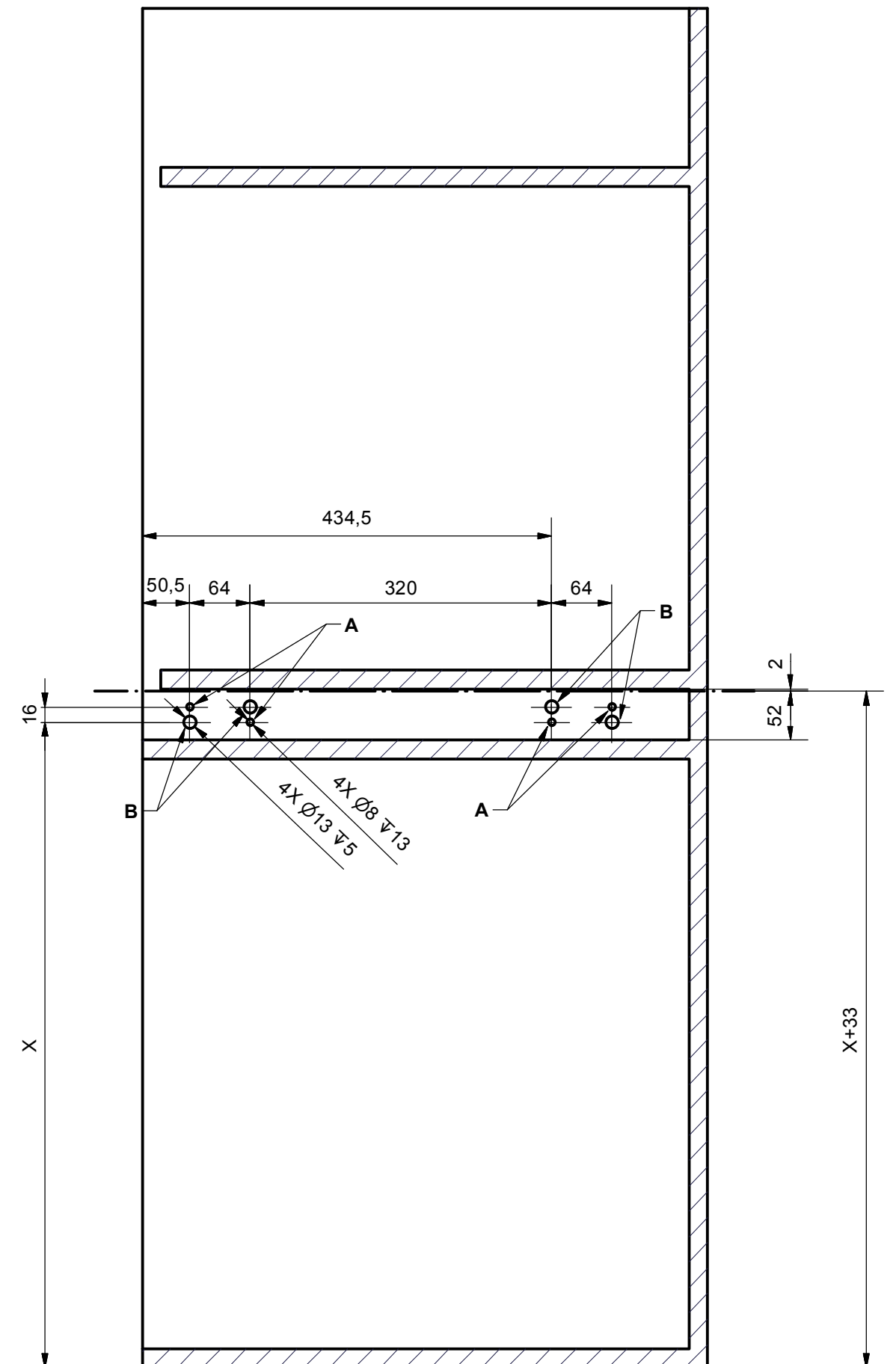
Per spalle di spessore < 20 mm usare i distanziali in ferro a corredo fissandoli sulle guide esterne.
For cabinet sides <20 mm use included steel spacers fixing them on the external slides

Spalla da 20 mm - nessun distanziale
 Spalla da 19 mm - 1 distanziale
 Spalla da 18 mm - 2 distanziale
 Spalla da 17 mm - 3 distanziale
 Spalla da 16 mm - 4 distanziale
 Spalla da 15 mm - 5 distanziale

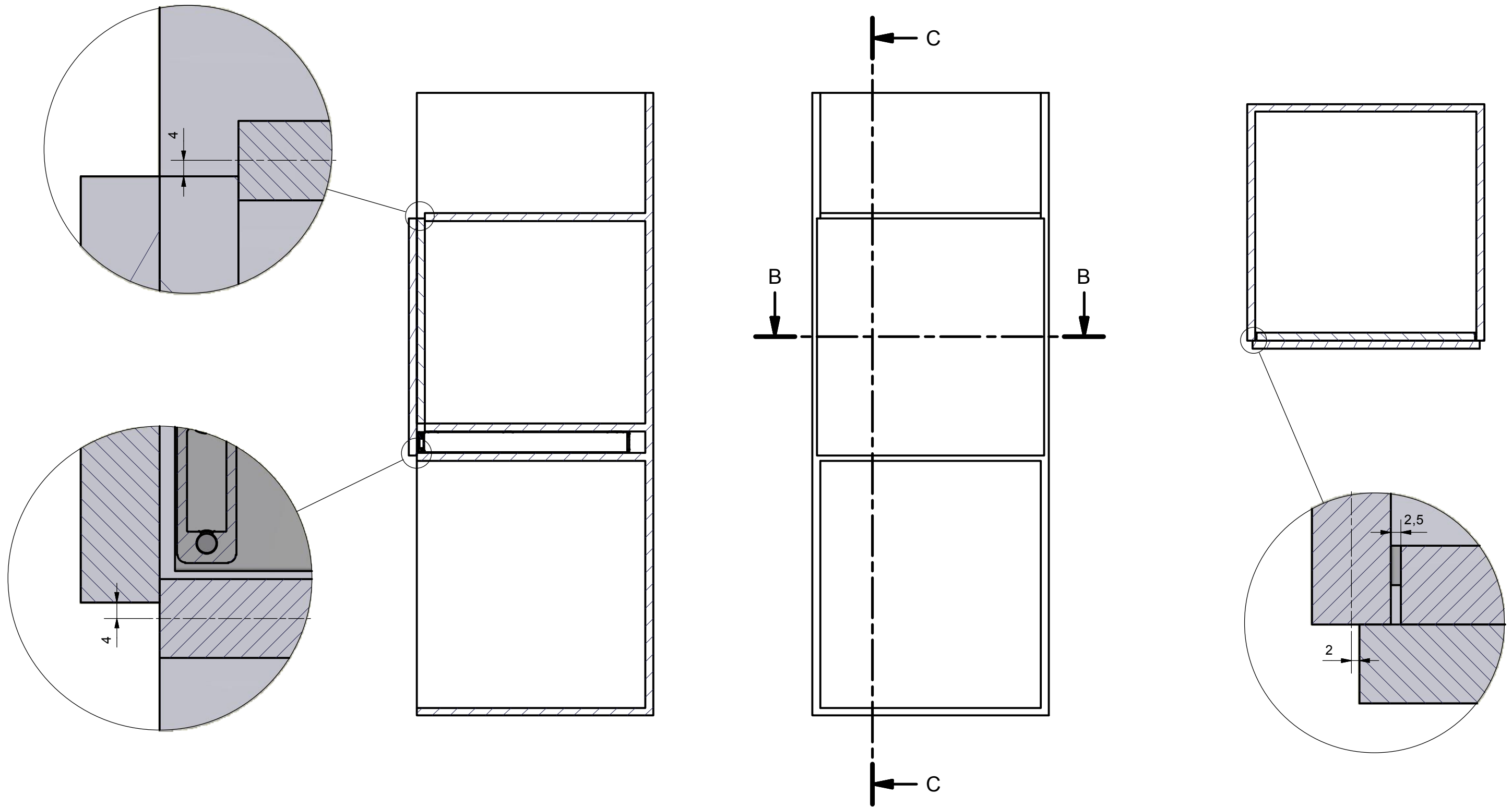
Side thickness 20 mm - no spacer
Side thickness 19 mm - 1 spacer
Side thickness 18 mm - 2 spacers
Side thickness 17 mm - 3 spacers
Side thickness 16 mm - 4 spacers
Side thickness 15 mm - 5 spacers



-  A. Chiave esa. n.3 - n.3 Allen key
-  C. Distanziale per spalla - Side spacer (x 20)
-  D. Bussola in ottone M6 12x8 mm - M6 12x8 mm brass bush (x 8)
-  E. Vite TCBCE M5x10 ISO 7380 - M5x10 ISO 7380 screw (x 8)

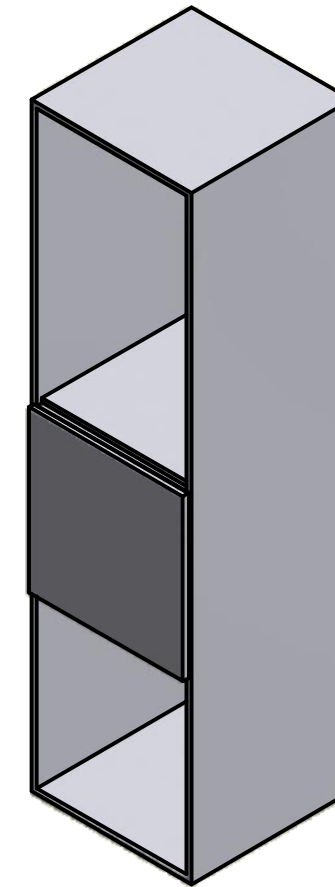
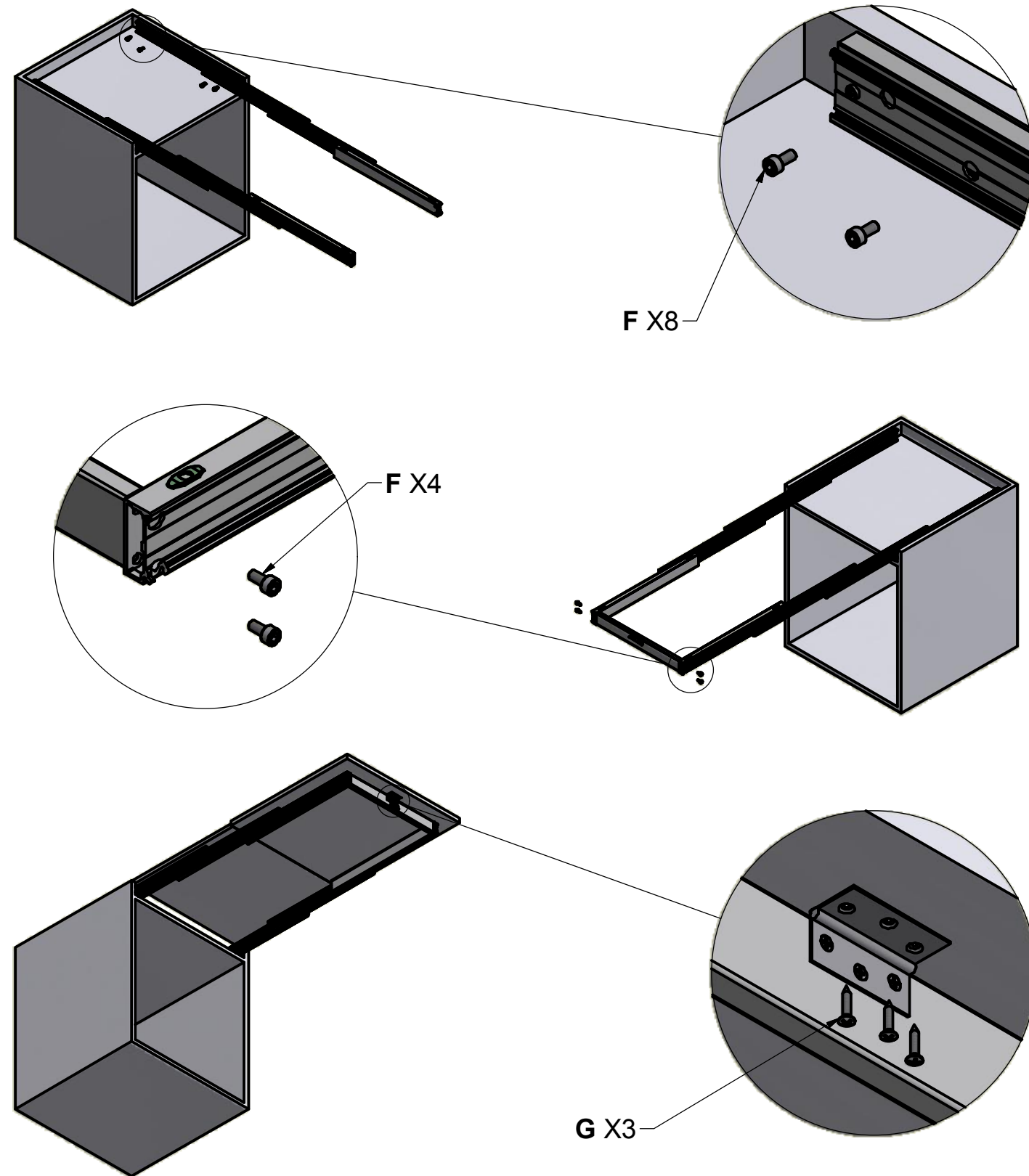


DIMENSIONI GENERALI MOBILE CHIUSO
GENERAL CABINET DIMENSIONS CLOSED

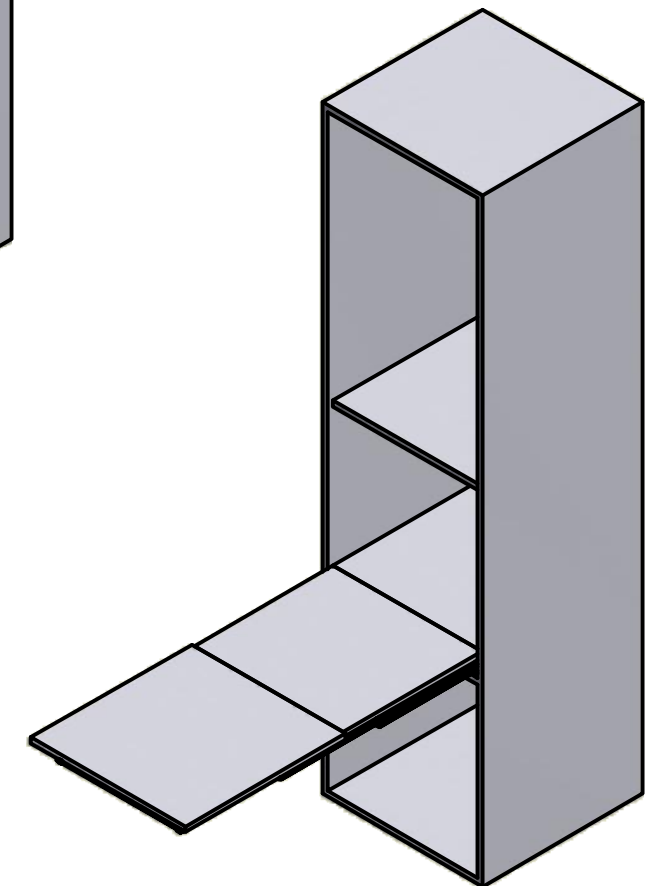


MONTAGGIO DEL MECCANISMO MOUNTING OF THE MECHANISM

SEQUENZA DI FUNZIONAMENTO FUNCTIONING SEQUENCE



CHIUSO
CLOSED



APERTO
OPENED

B. Chiave esa. n.5 - n° 5 Allen key

F. Vite TCCE M6x12 - M6x12 socked head cap screw (x 12)

G. Vite truciolare 3.5x16 - 3.5x16 chipboard screw (x3)